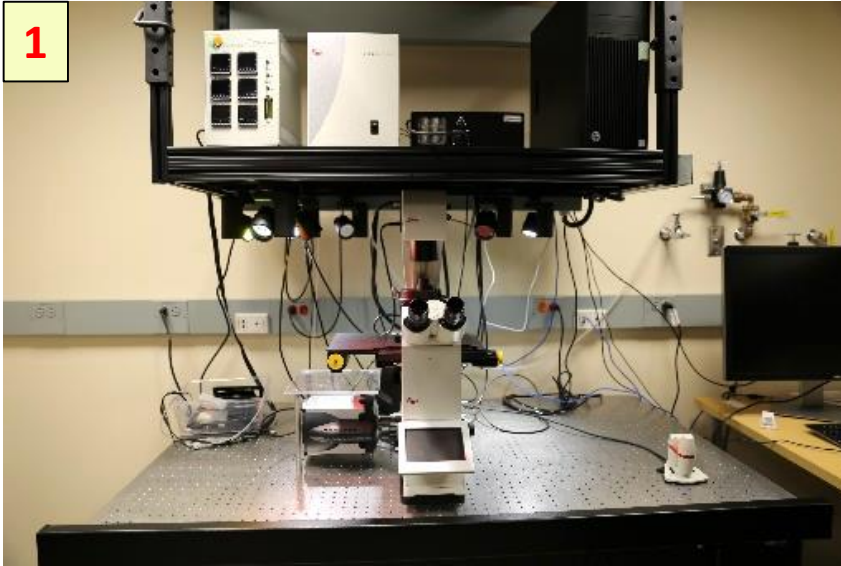


Quick Start – Widefield Microscope (DMi8) West Campus Imaging Core

1



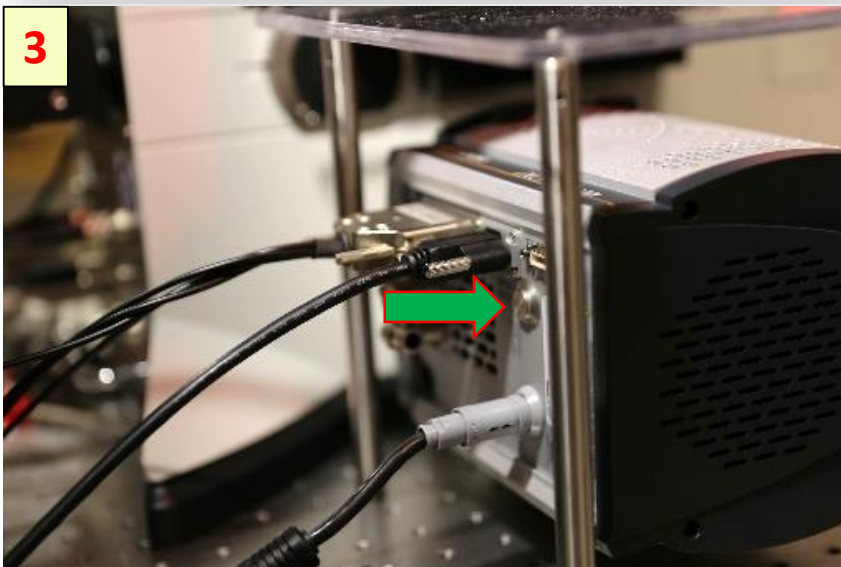
Remove the
microscope cover

2



Turn On the
microscope control
unit

3



Turn On Ultra-888
camera

4



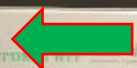
Select the objective lens on the microscope display

5

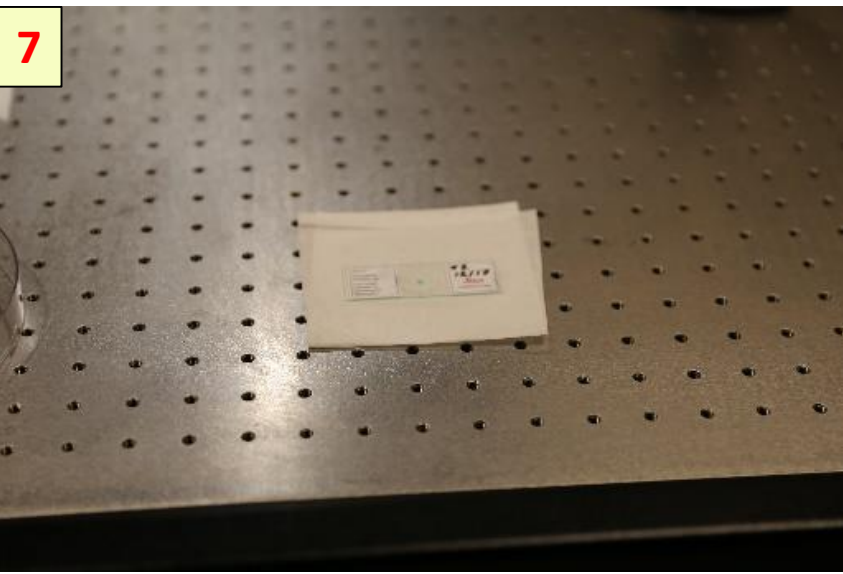


Turn on CO2 gas valve for incubator use

6



Turn on Tokai Hit power for incubator use



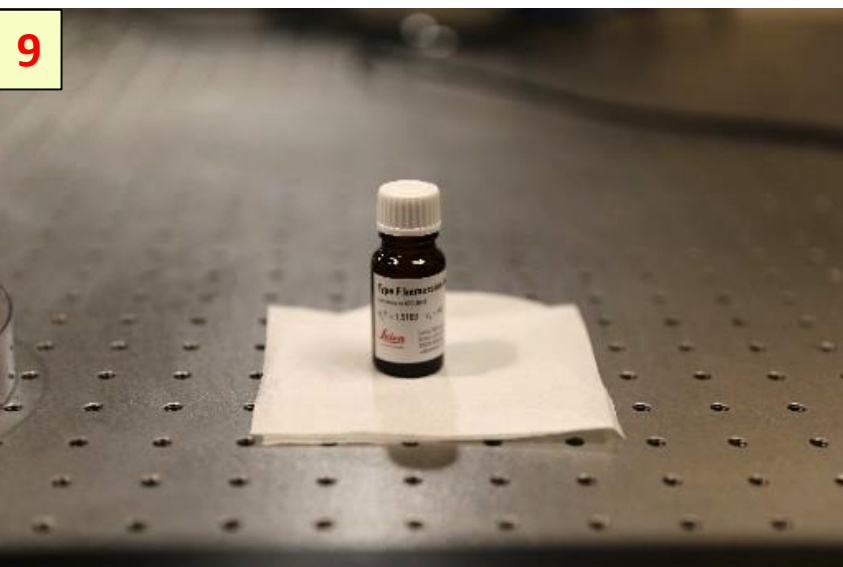
7

Place the slide/dish on a clean surface



8

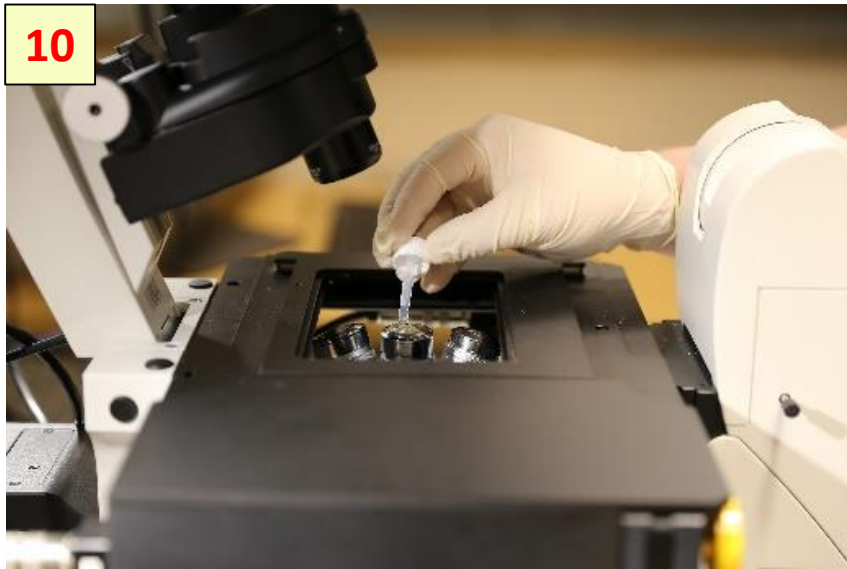
Use the Lens Tissue to clean the objective lens



9

Use Leica Type F liquid for oil immersion lenses

10



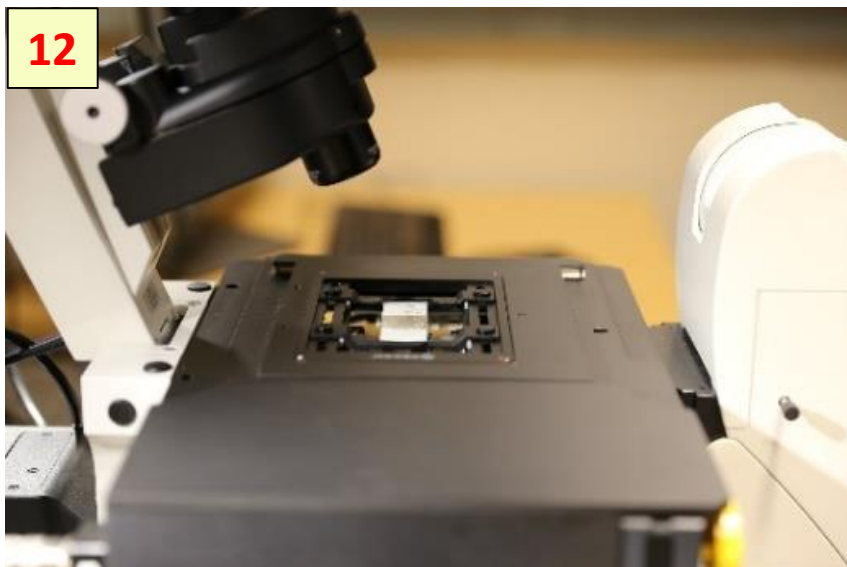
Put drop of oil on the lens of immersion objective

11



Install the slide/dish holder or the incubator

12



Install a slide or dish above the objective lens

13



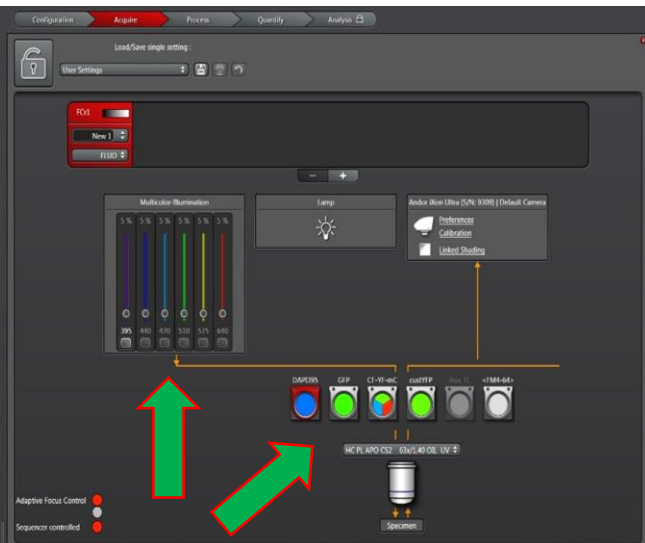
Using your Net ID and password login to FOM lock screen

14



Start up Leica LAS-X software

15



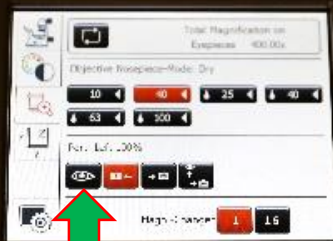
Select the dichroic cube and set a LED source power

16



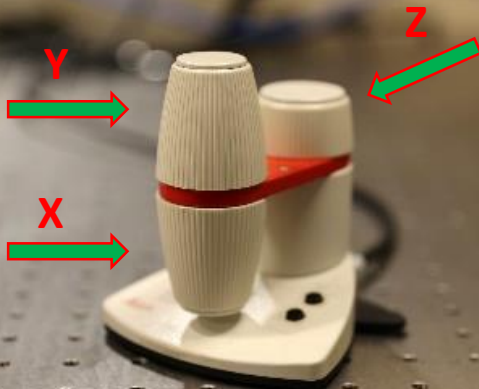
Select eyepiece button and activate Live on LAS-X

17



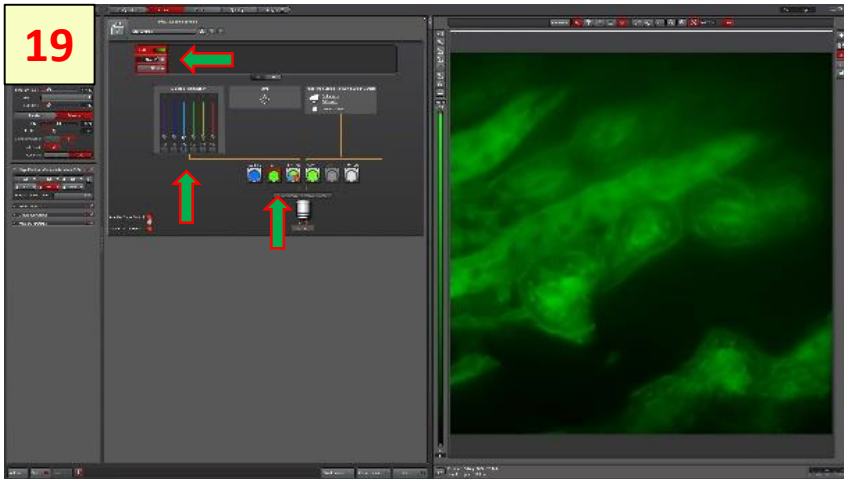
Select the objective lens on the display

18



Use joystick to align the sample and objective lens positions

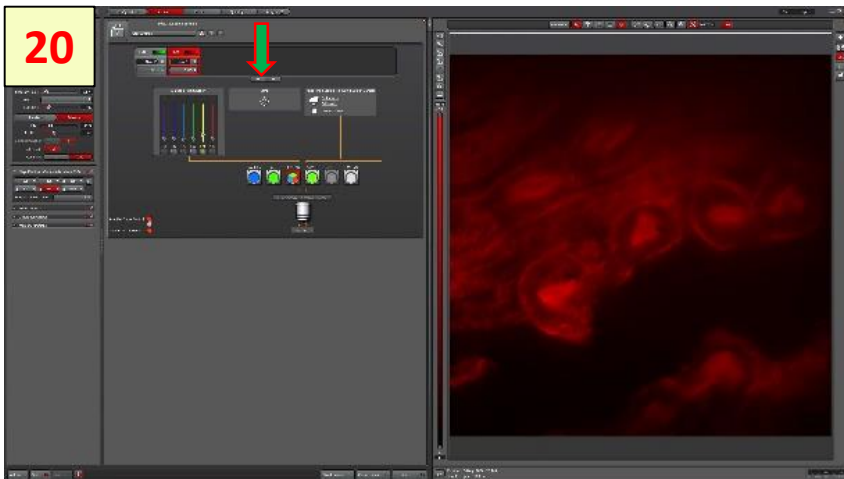
19



Set a channel:

- Click on the dichroic cube icon
- Set LED power
- Click on the Start button

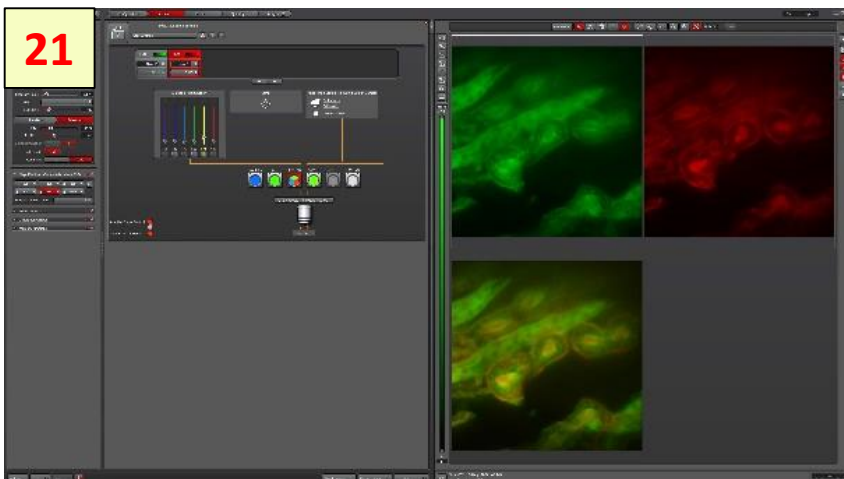
20



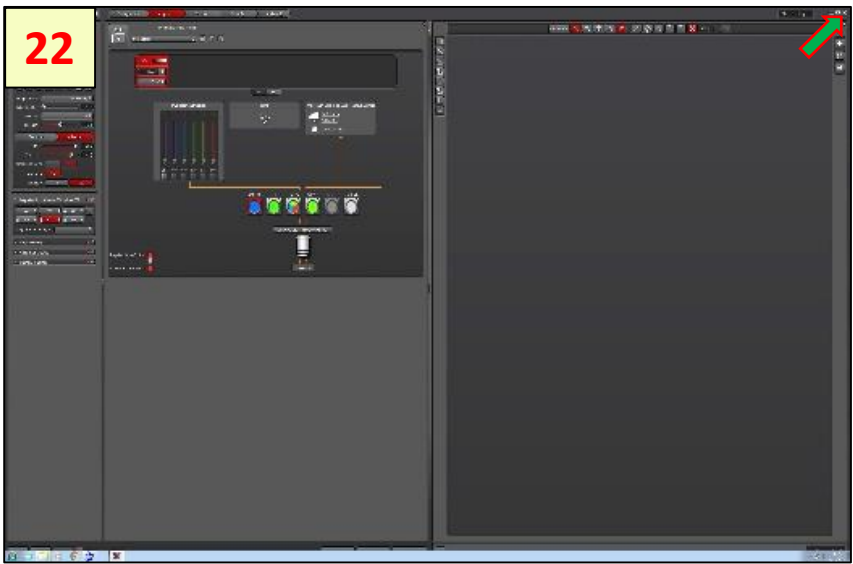
To set second channel:

- Click on the plus icon
- Select dichroic cube
-

21

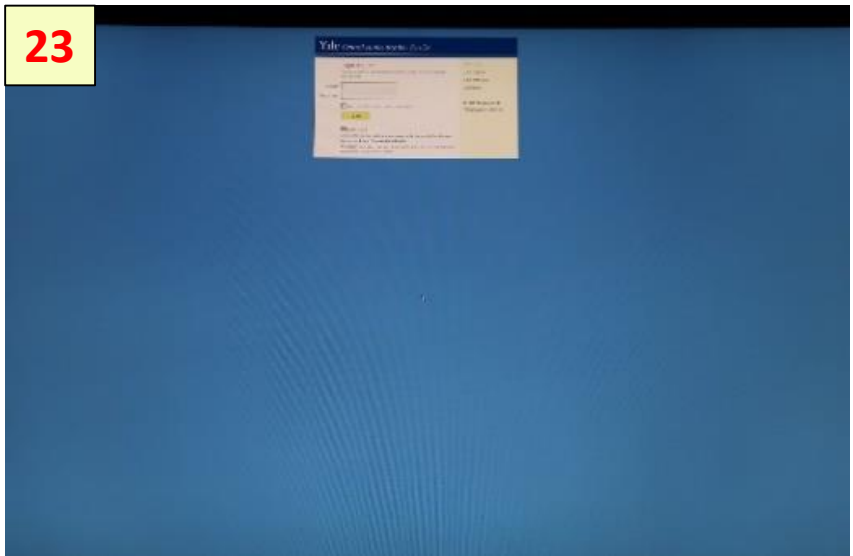


Adjust the camera settings: exposure time and gain control(max value 270 units)



22

To close the LAS-X software click on the upper right window corner



23

Use the FOM logoff interface menu



24

Turn off the Tokai Hit power

25



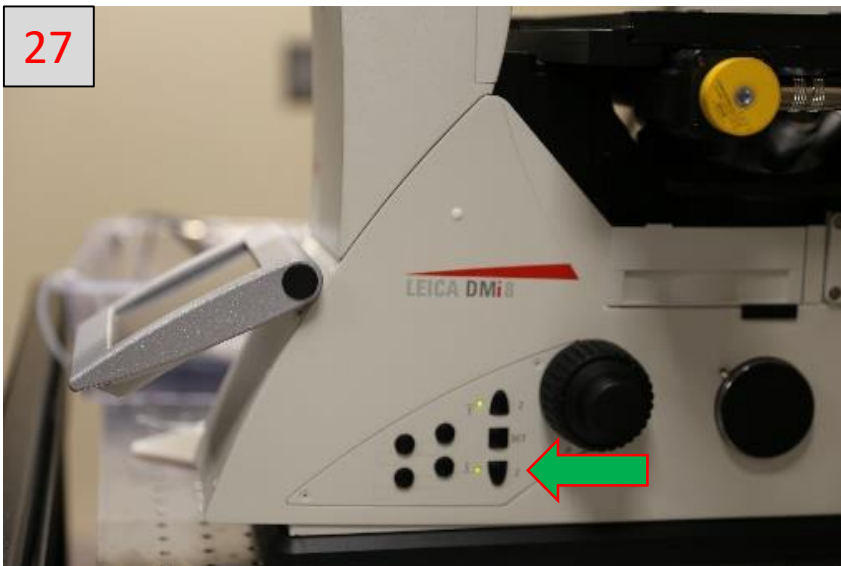
Turn off the CO2 gas valve

26



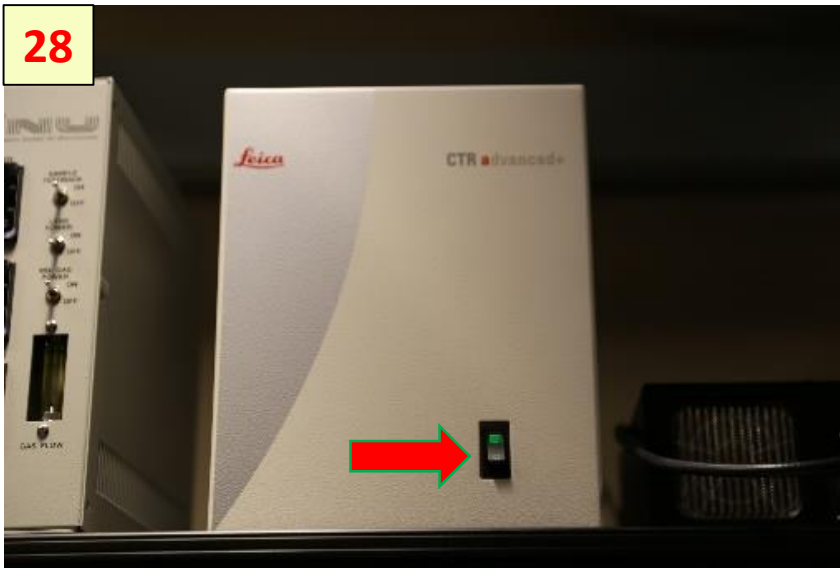
Clean the objective lens using Lens Tissue

27



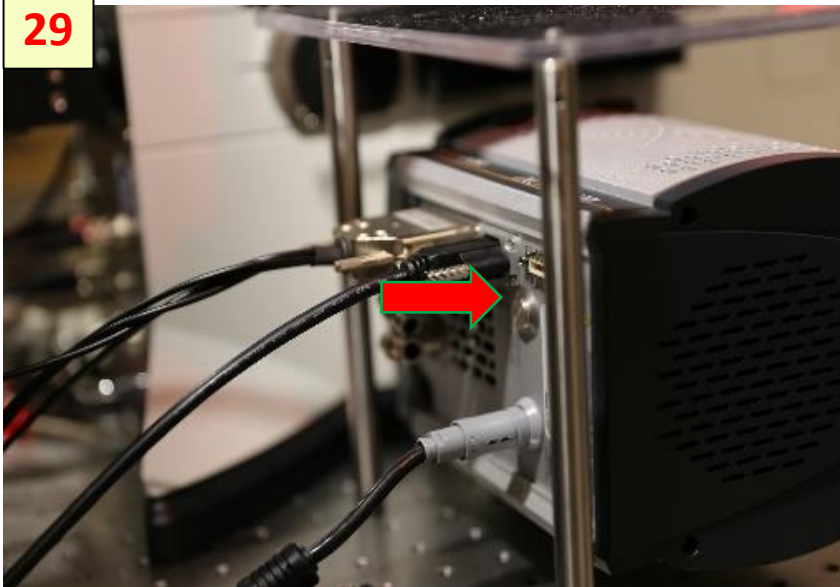
Move the objective to home position

28



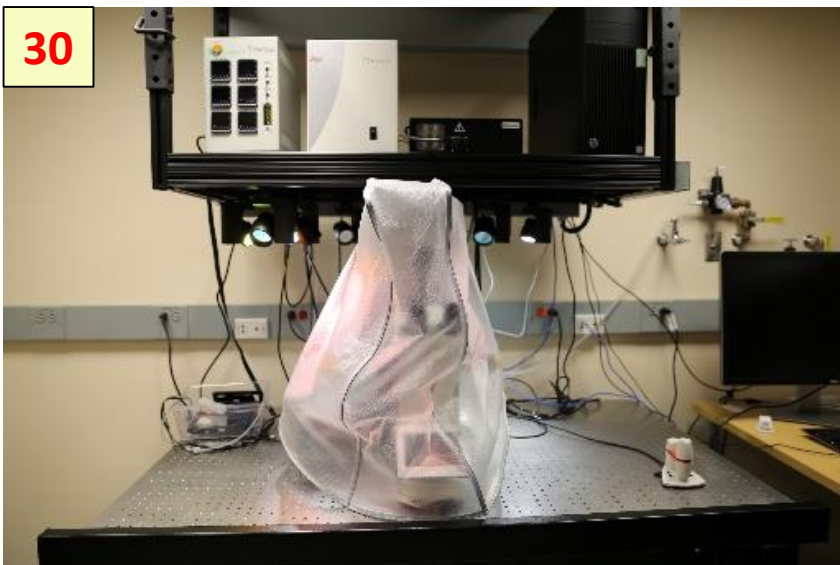
Turn off the microscope control unit

29



Turn off the Ultra-888 camera

30



Put the microscope cover above the instrument